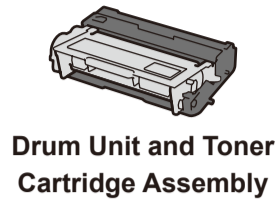


Unpack the machine and check the components



NOTE:

• Use the appropriate interface cable for the connection you want to use. (Network cable is not a standard accessory.)

USB cable

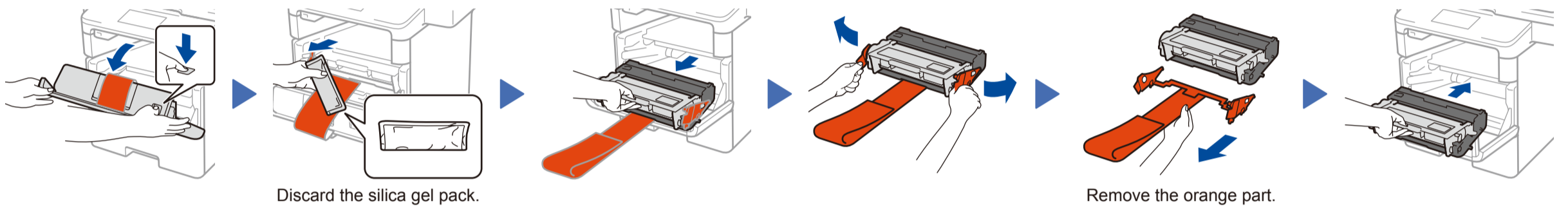
We recommend using a USB 2.0 cable (Type A/B) that is no more than 2 metres long.

Network cable

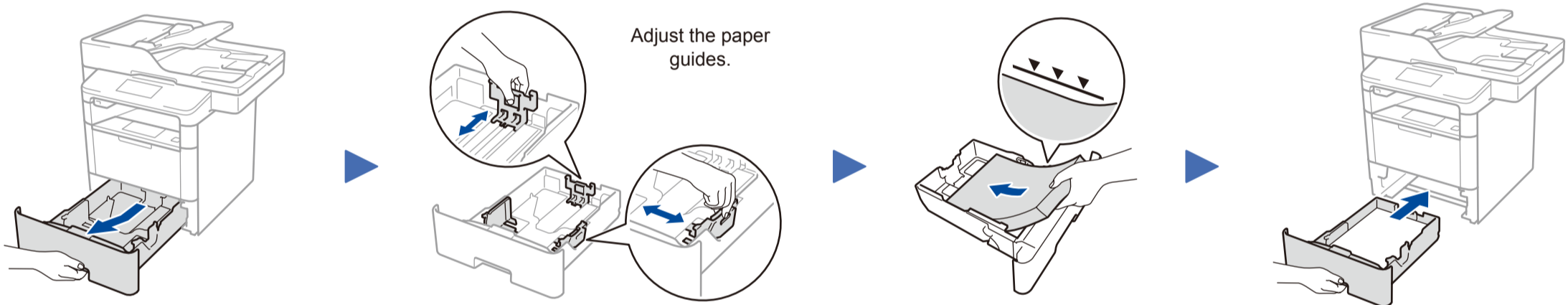
Please purchase a straight-through Category 5 (or greater) twisted-pair cable for the machine.

• The illustrations in this Quick Setup Guide show the M8950DNF.

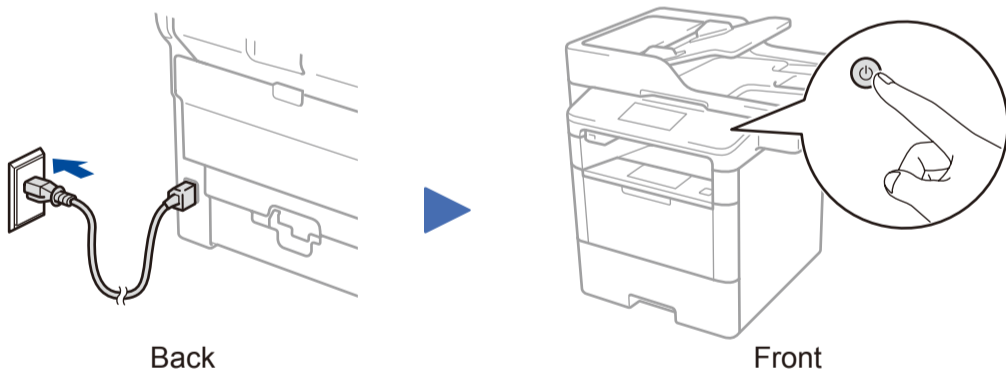
1 Remove the packing materials and install the drum unit and toner cartridge assembly



2 Load paper in the paper tray

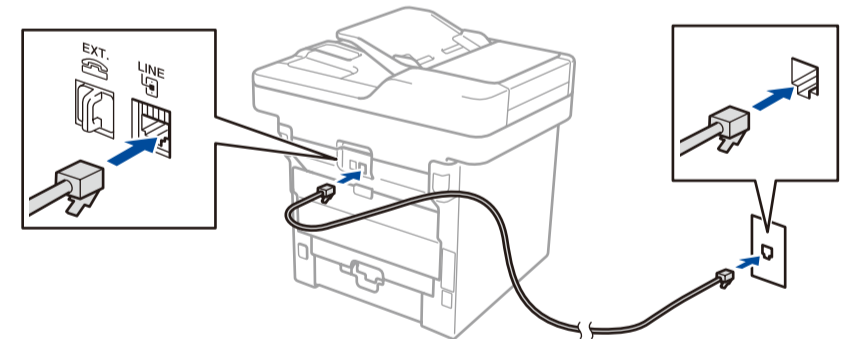


3 Connect the power cord and turn the machine on



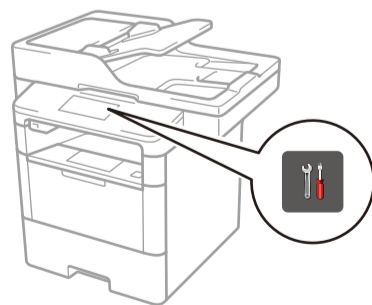
4 Connect the telephone line cord (for M8950DNF)

If you do not plan to use the fax feature on this machine, go to step 5.



5 Select your language (if needed)

1. On the machine's Touchscreen, press [设置] (Settings) > [所有设置] (All Settings) > [初始设置] (Initial Setup) > [语言] (Local Language).
2. Press your language.
3. Press [OK].



6 Configure the machine for faxing (for M8950DNF)

If you do not plan to use the fax feature on this machine, go to step 7.

NOTE:

- For more information on using the fax feature, see the *User's Guide*.
- Your machine is programmed to automatically receive faxes. To change this default mode, see the *User's Guide*.

Set the date and time

Press [Settings] > [All Settings] > [Initial Setup] > [Date & Time].

Date

1. Press [Date].
2. Enter the last two digits for the year using the Touchscreen, and then press [OK].
3. Enter the two digits for the month using the Touchscreen, and then press [OK].
4. Enter the two digits for the day using the Touchscreen, and then press [OK].

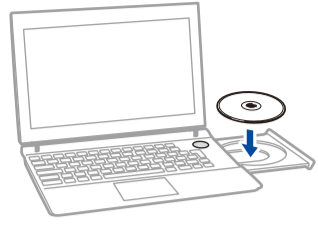
Time

1. Press [Time].
2. Enter the time using the Touchscreen.
3. Press [OK].
4. Press [OK].



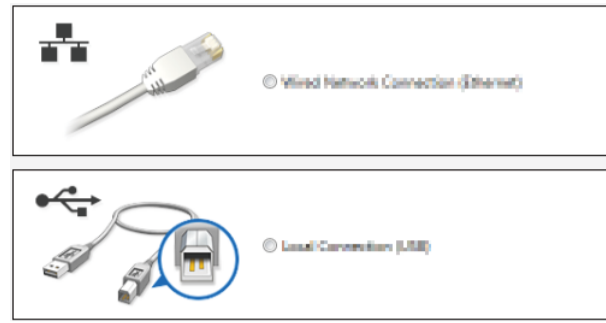
7 Connect your machine and install software

Windows® computer with CD-ROM drive



NOTE:
If the Lenovo screen does not appear automatically, click **(Start) > Computer (My Computer)**.
(For Windows® 8: click the **(File Explorer)** icon on the taskbar, and then go to **Computer (This PC)**.)
Double-click the CD-ROM icon, and then double-click **start.exe**.

Choose your Connection Type:



Macintosh/Windows® computer without CD-ROM drive

You can download the latest device driver for free from the Lenovo Support Website, enabling you to use your Lenovo machine as a printer.
Visit us at <http://www.lenovo.com>

▶ Follow the on-screen instructions to continue installation.

Finish

NOTE:
If connection is unsuccessful, repeat this step.