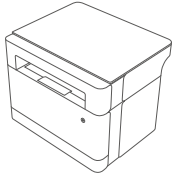


# Quick Setup Guide

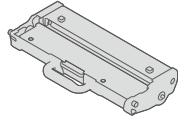
1 Read this guide carefully before using the printer, and keep this guide properly for future reference. This Guide outlines the steps to set up the printer. For more details, see the User Manual. This Guide illustrates the setup steps using M260DW as an example.

## Installing the printer

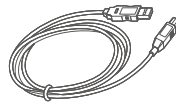
### 1) Package overview



print \* 1



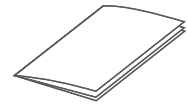
Toner cartridge \* 1



USB cable \* 1



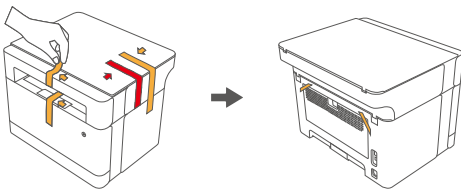
Power cord \* 1



Quick Setup Guide \* 1  
Safety Instructions \* 1  
Warranty Certificate \* 1

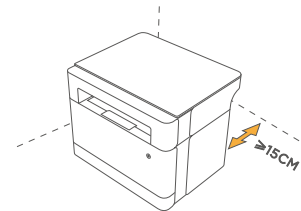
### 2) Removing tape

Remove all orange packing tape inside and outside the printer.



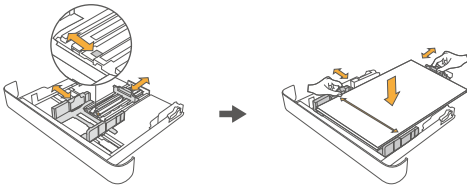
### 3) Position and space

Place the printer on a flat and stable surface, with a space of more than 10cm reserved on its back side.



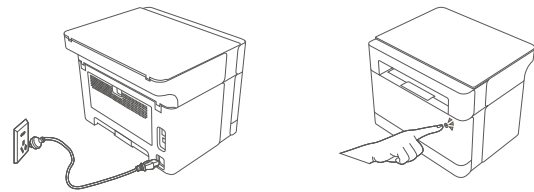
### 4) Loading paper

Pull out the paper tray completely. Hold the handle at the rear of the paper tray, and then pull it backward. Load the paper smoothly; Hold and adjust the rear and left baffles to secure the paper. Then, push the tray back in place.



### 5) Startup

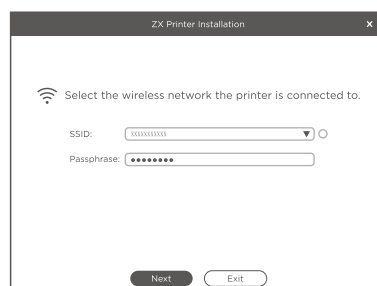
Connect the power supply to the printer, and then press the Power button to power on the printer.



## Download the driver

1 Windows 10 is used as an example in this guide. The actual steps depend on the operating system you are using. For installing drivers with Mac OS X and Linux, see the User Manual.

- Download the driver for your model from the official website [www.simry.com.cn](http://www.simry.com.cn) and install them properly.
- To install the driver for a Wi-Fi model, connect your PC where the printer drivers are to be installed to the wireless network. In this way, the printer can be connected to the same network while installing the driver and you can print with your mobile devices under the same wireless network. Make sure that your PC is connected to a 2.4 GHz wireless network.
- Power on the printer and connect your PC to the printer with a USB cable.
- The main page for installation appears on the screen. Select a language as needed. Read the License Agreement carefully and accept it by clicking the box in front of "I have agreed to use the ZX Printer Driver". For better services, you are expected to participate in the User Experience Program and agree to the collection of your printer usage data. Click Next.
- For a Wi-Fi model, the system automatically recognizes the 2.4 GHz wireless network to which your PC is connected and automatically fills in the Wi-Fi Service Set Identifier (SSID) and Passphrase to configure the printer. If the system fails to automatically fill in the Passphrase, refresh it by clicking the green circle icon to the right of the SSID. If the system still fails to automatically fill in the Wi-Fi SSID and Passphrase, please check whether your PC is properly connected to the 2.4 GHz wireless network and refresh it again.

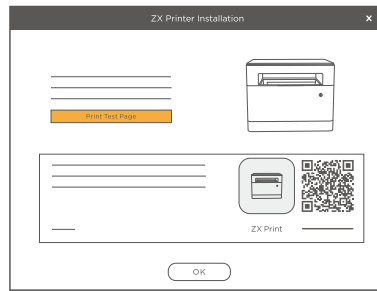


P5S1A028 A

f)Click Next and wait for the driver installation to complete.

g)After installation, click Print Test Page to check whether the driver is successfully installed, or you can directly select the restart mode and click OK to quit the driver installation process. (Note: The scanner driver requires a system reboot before it can be used.)

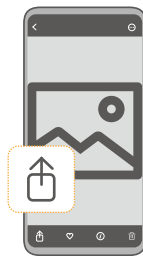
h)After installing the printer driver, your printer is ready for use.



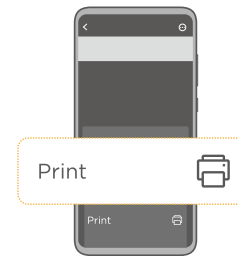
⚠ A mobile device (either Android or iOS system) can send print commands directly to the printer with the Wi-Fi function provided that it is under the same WLAN as the device.

### 1)Print with iPhone

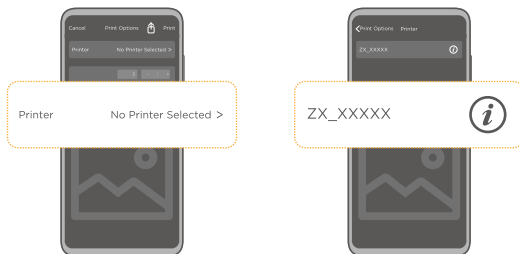
a)Make sure your iPhone and the printer are under the same wireless network. Select a photo in your iPhone's album and click Share.



b)Click Print in the pop-up menu.



c)For first-time use, you need to add the printer to your phone's printer list.

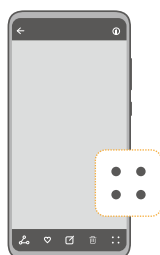


d)Click Print to complete the printing process.



### 2)Print with an Android device

a)Make sure your Android device and the printer are under the same wireless network. Select a photo in your Android device's album and click More.



b)Click Print or export as PDF in the pop-up menu.



c)Select the printer and click Print to complete the printing process.  
d)You are recommended to install the Mopria printing service from [www.Mopria.org](http://www.Mopria.org) to enable printing with your Android device as described above.